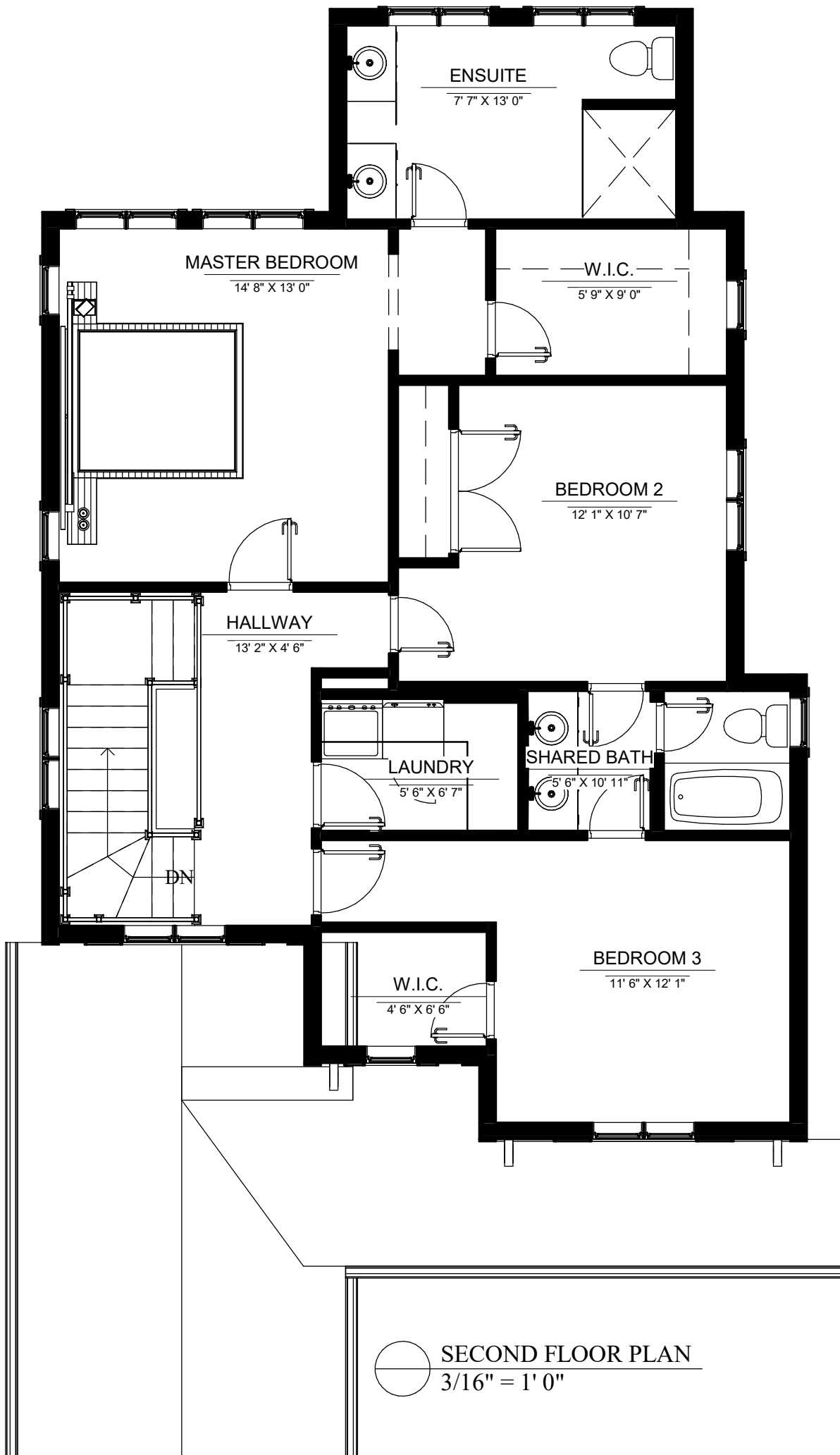
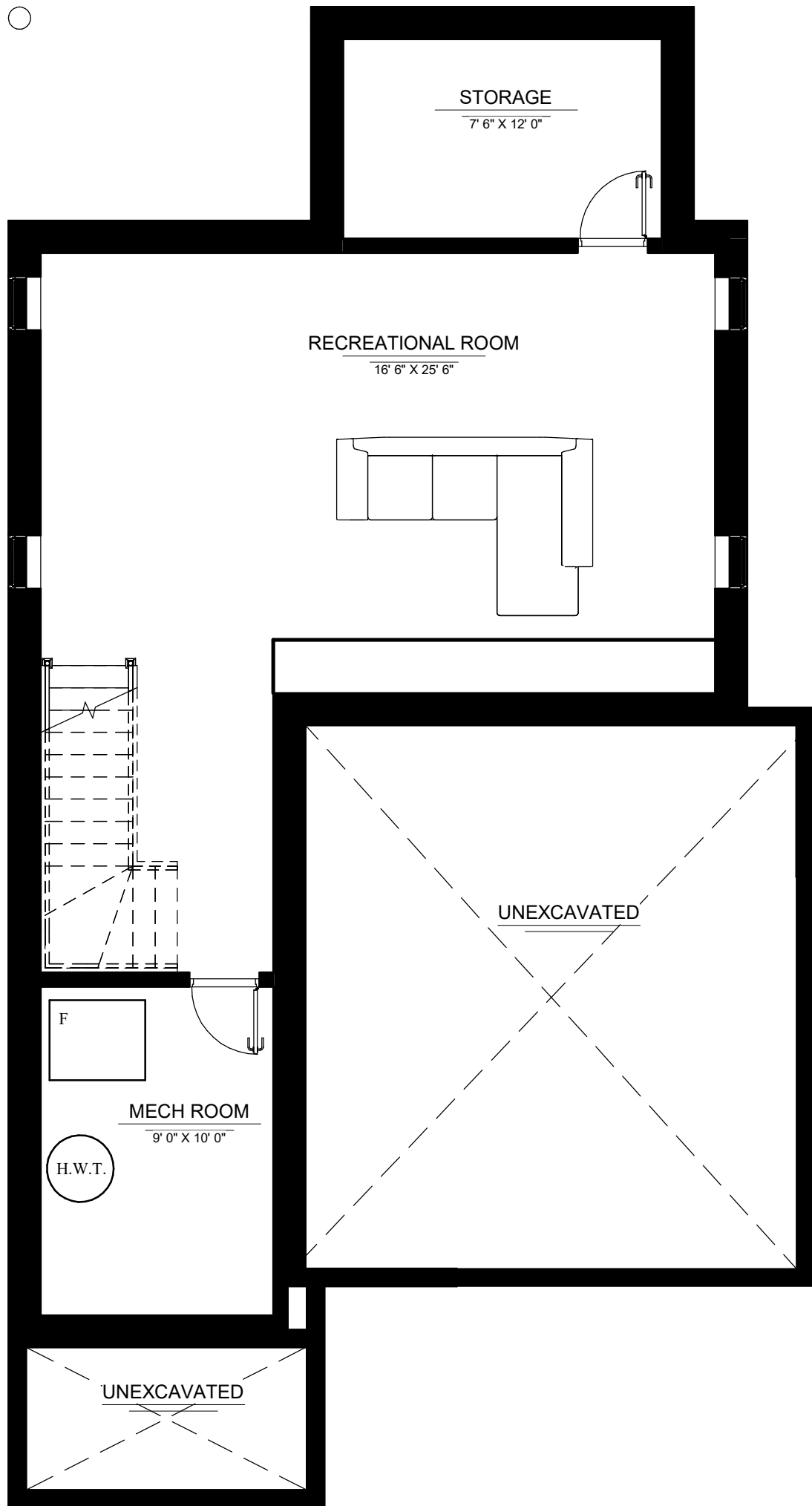
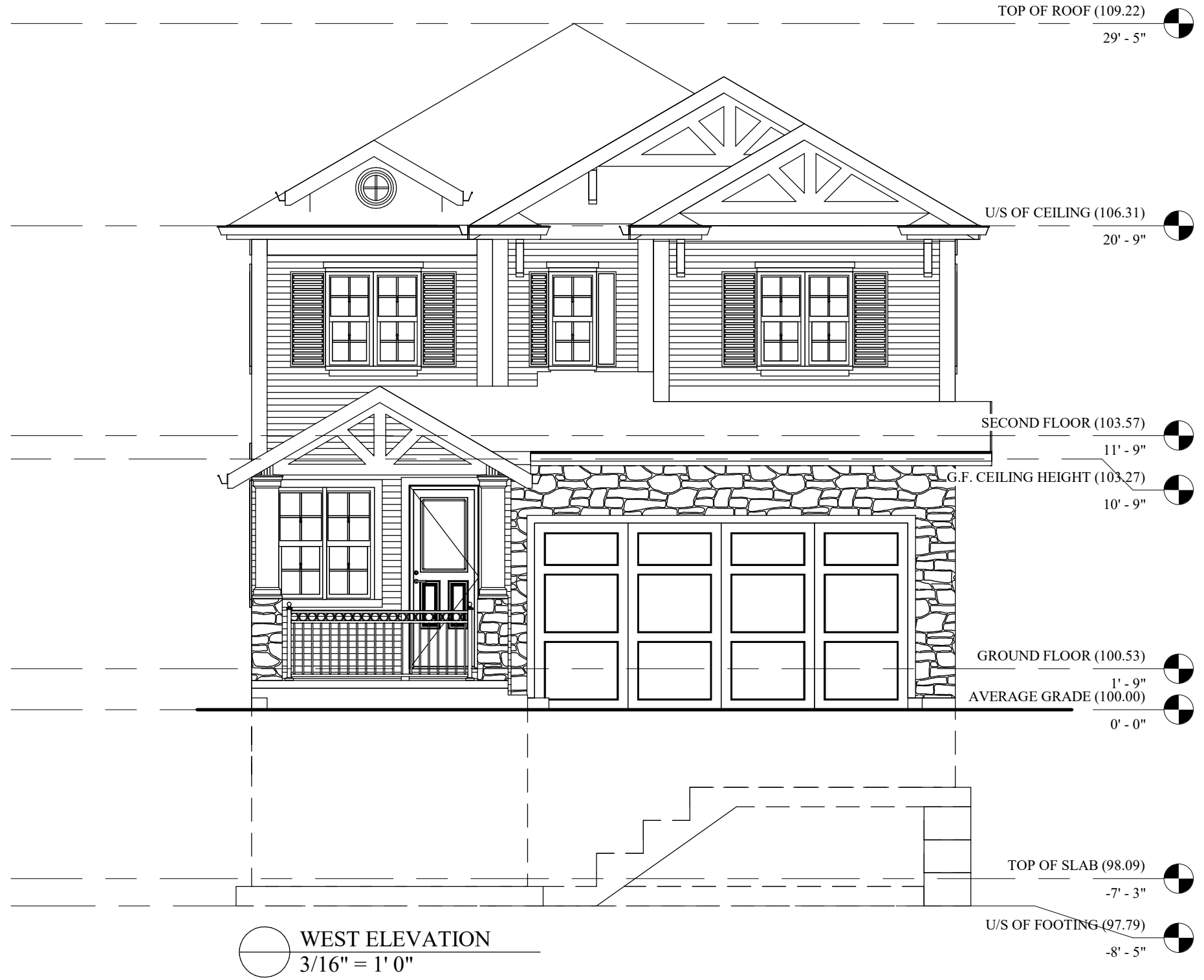

GROUND FLOOR PLAN
 3/16" = 1' 0"





○ BASEMENT PLAN
3/16" = 1' 0"



TOP OF ROOF (109.22)
29' - 5"

U/S OF CEILING (106.31)
20' - 9"

SECOND FLOOR (103.57)
11' - 9"

G.F. CEILING HEIGHT (103.27)
10' - 9"

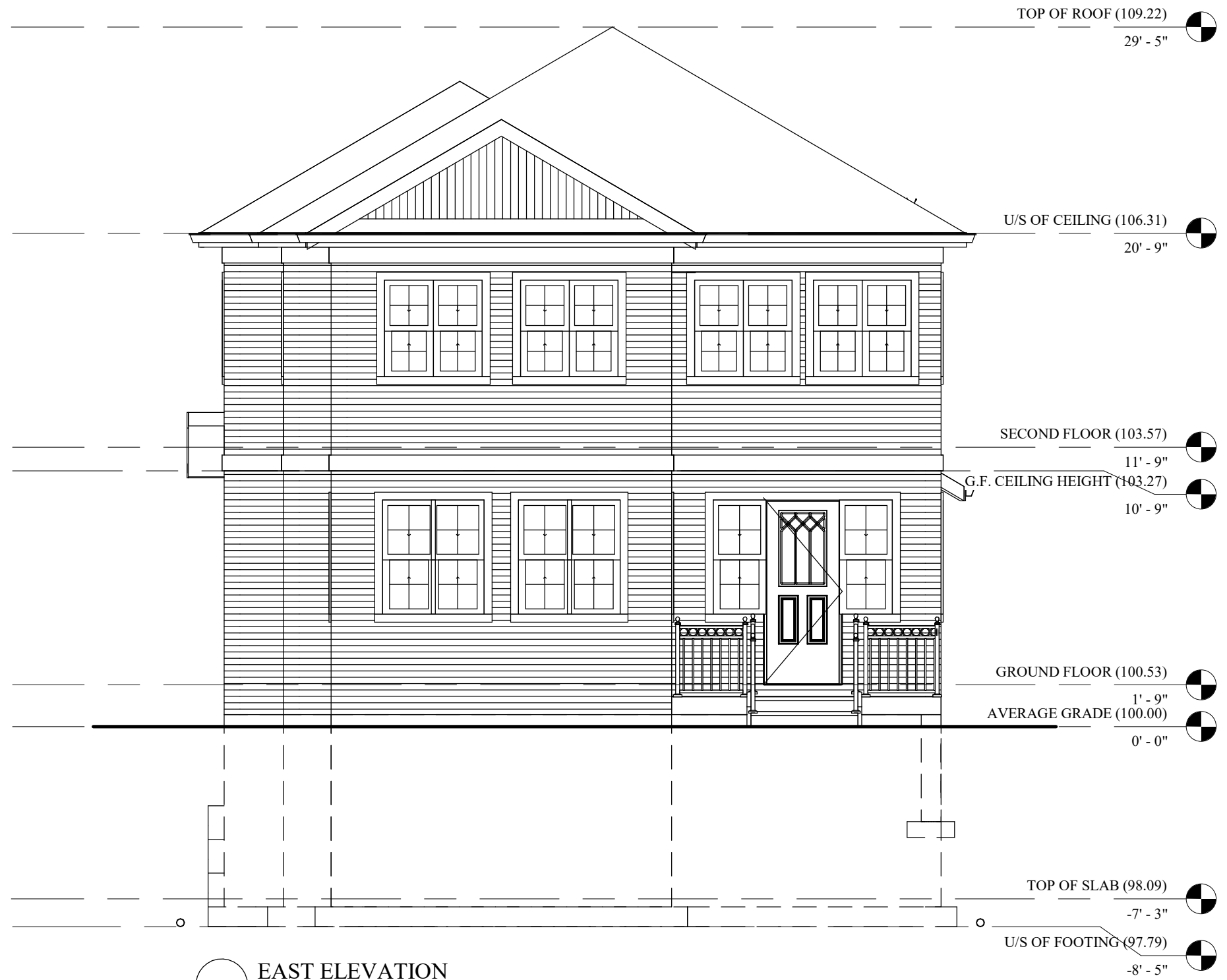
GROUND FLOOR (100.53)
1' - 9"

AVERAGE GRADE (100.00)
0' - 0"

TOP OF SLAB (98.09)
-7' - 3"

U/S OF FOOTING (97.79)
-8' - 5"

WEST ELEVATION
3/16" = 1' 0"



TOP OF ROOF (109.22)
29' - 5"

U/S OF CEILING (106.31)
20' - 9"

SECOND FLOOR (103.57)
11' - 9"

G.F. CEILING HEIGHT (103.27)
10' - 9"

GROUND FLOOR (100.53)
1' - 9"

AVERAGE GRADE (100.00)
0' - 0"

TOP OF SLAB (98.09)
-7' - 3"

U/S OF FOOTING (97.79)
-8' - 5"

○ EAST ELEVATION
3/16" = 1' 0"



TOP OF ROOF (109.22)
29' - 5"

U/S OF CEILING (106.31)
20' - 9"

SECOND FLOOR (103.57)
11' - 9"

G.F. CEILING HEIGHT (103.27)
10' - 9"

GROUND FLOOR (100.53)
1' - 9"
AVERAGE GRADE (100.00)
0' - 0"

TOP OF SLAB (98.09)
-7' - 3"

U/S OF FOOTING (97.79)
-8' - 5"

SOUTH ELEVATION
3/16" = 1' 0"

